



**Leadership Centre** for local government



# Total Place

Geoff Norris

Adviser  
Kent & Bradford Projects

Leadership Centre for Local Government



# What is total place?



Leadership Centre for local government

**An ambitious and challenging programme that brings together elements of central government and local agencies within a place to achieve three things around a priority issue:**

- 1. Service transformations that can improve the experience of local residents and deliver better value**
- 2. Early efficiencies to validate the work**
- 3. A body of knowledge about how more effective cross-agency working delivers the above**



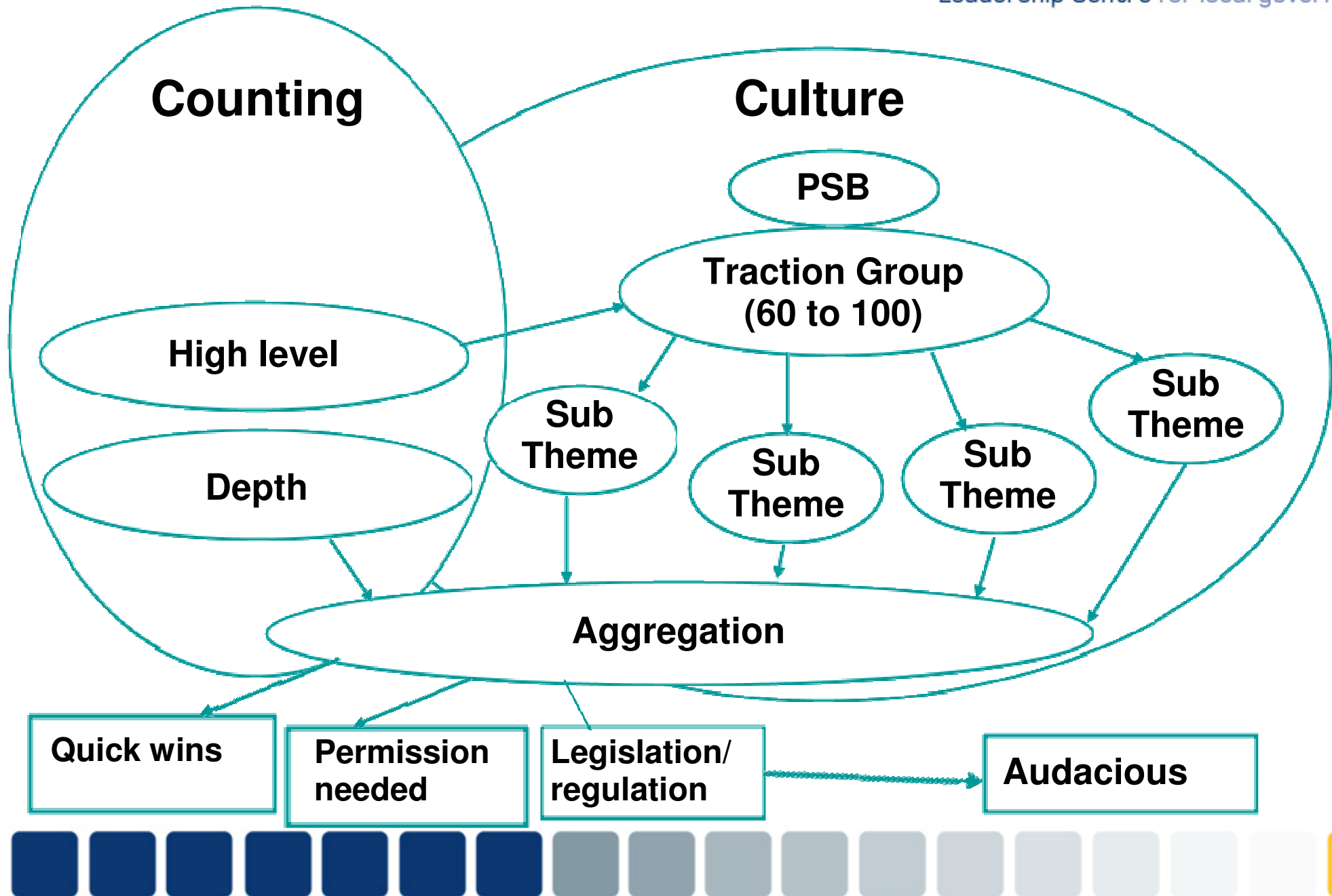


## Two complimentary strands:

- a ‘counting’ process (mapping money flowing through the place from central and local bodies) and make links between services to identify where public money can be spent more effectively
- a ‘culture’ process that looks at “barriers to progress” and the ‘the way we do things round here’ and how that helps or hinders what is trying to be achieved



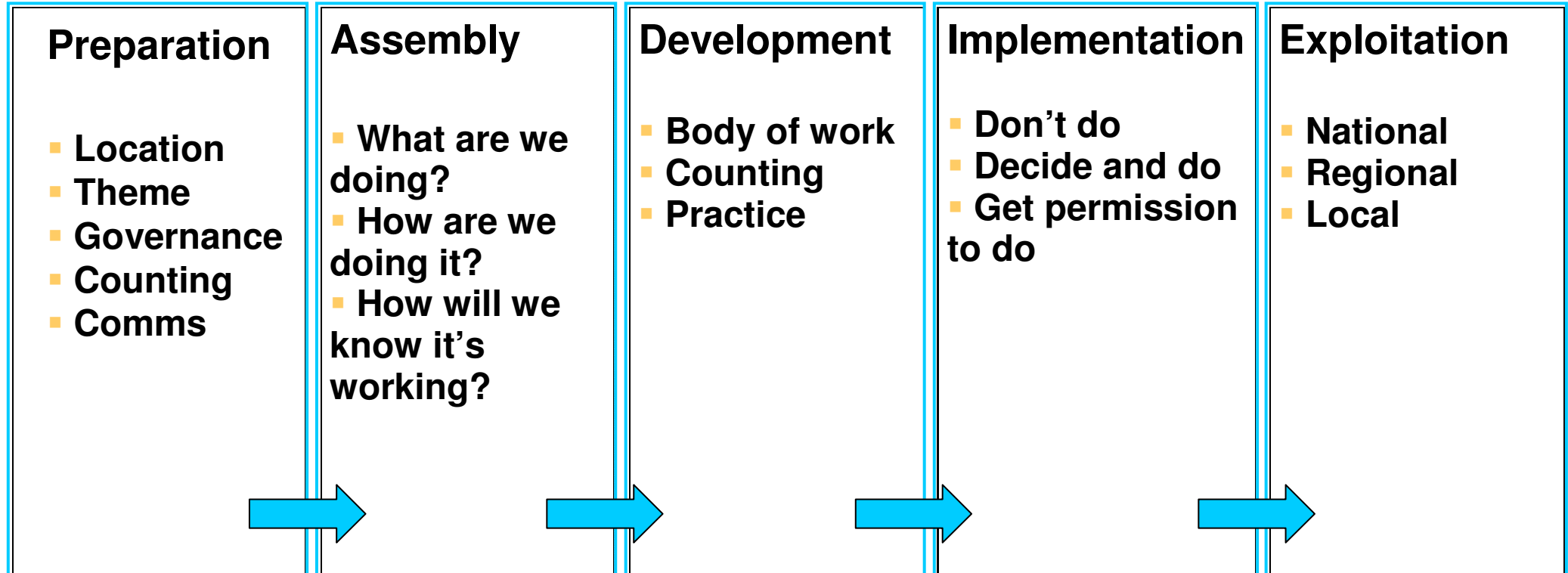
# Total Place: Overview

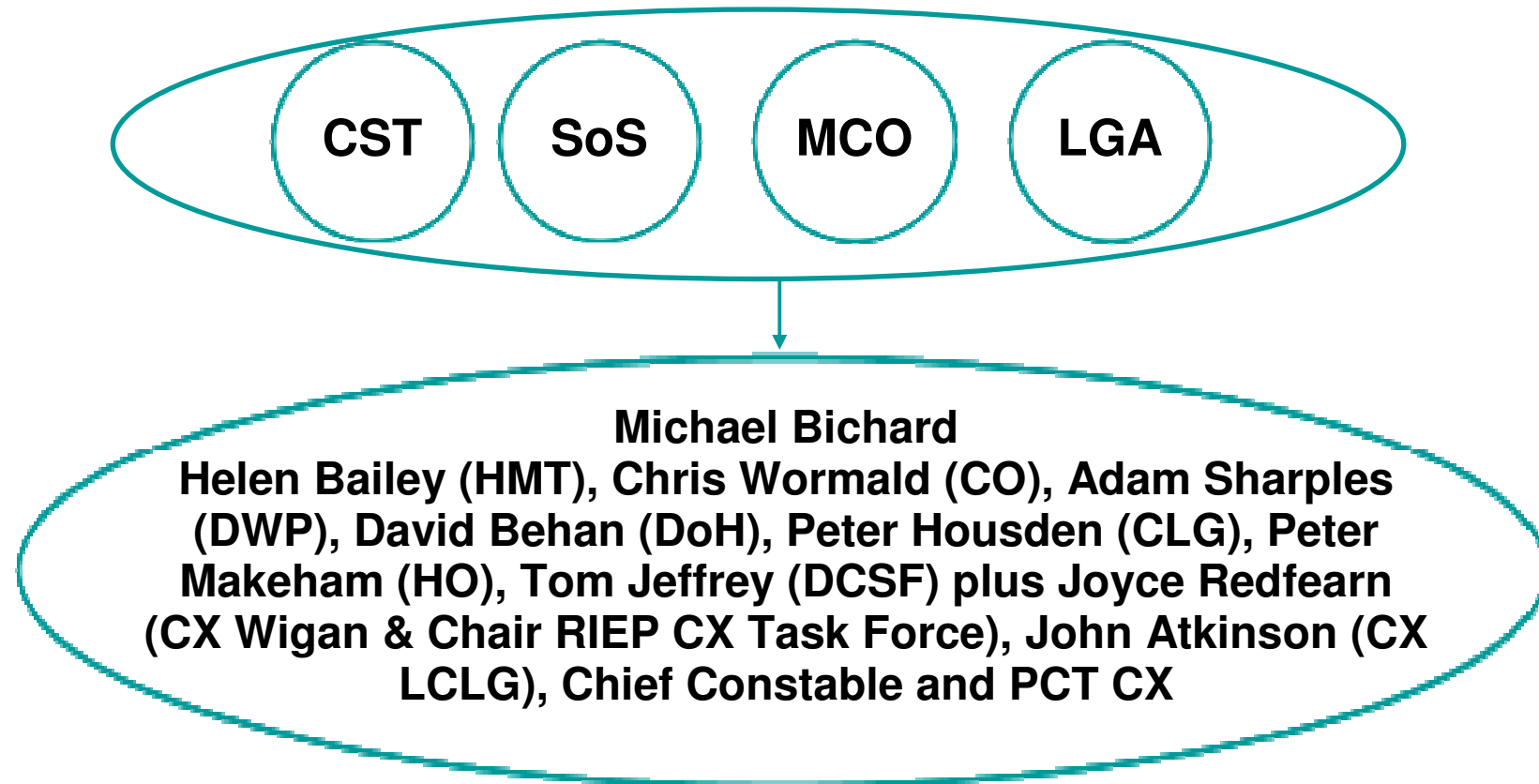


# The journey



Leadership Centre for local government







## The pilot areas are:

- **Dorset, Poole & Bournemouth**
- **Kent**
- **Croydon**
- **Lewisham**
- **Luton & Central Bedfordshire**
- **Leicester & Leicestershire**
- **Coventry & Solihull**
- **Worcestershire**
- **Birmingham**
- **Bradford**
- **Manchester City Region & Warrington**
- **South Tyneside, Gateshead & Sunderland**
- **Durham**



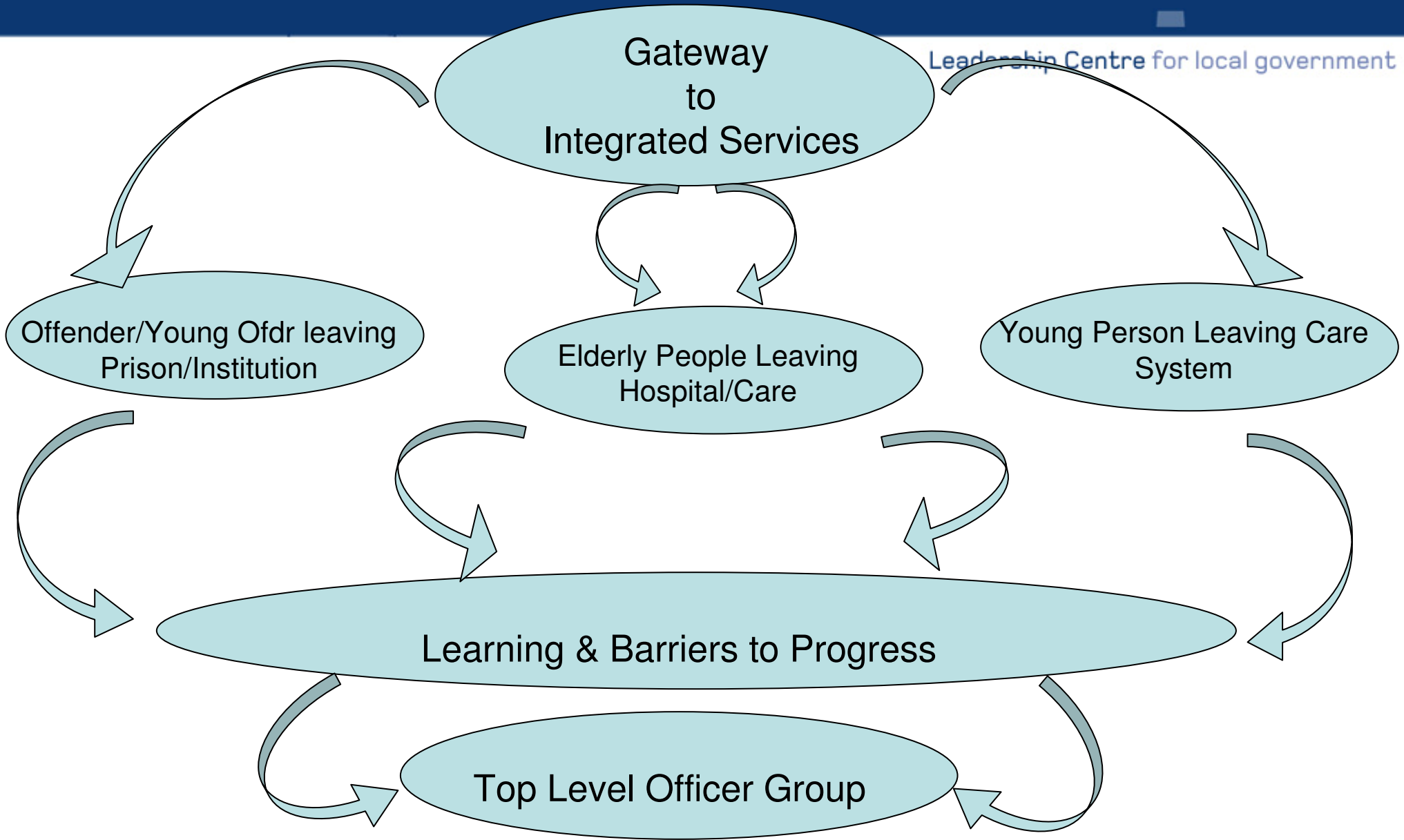


- Children/child health
- Health and Social Care
- High cost/High need communities
- Crime; reducing re-offending
- Alcohol & Drugs
- Total Community
- Asset management
- Access to public services



# The Bradford Integrated Service Model

Leadership Centre for local government



# What does Total Place offer Kent?



Leadership Centre for local government

- unique opportunity to challenge and change the way we work
- ability to influence and significantly change the relationship between central & local government
- provide evidence through business cases of long-term sustainable efficiency gains and improved VFM
- achieve the realignment of central government budgetary provision (both revenue & capital) with ours
- significantly improve the level of service to the people of Kent



# What must we do to secure the future of the Total Place Approach?



Leadership Centre for local government

- maximise the “once in a lifetime” opportunity to positively influence the next government – engage with the shadow cabinet *outline the potential benefits from this “window of opportunity”, they should not be underestimated or underused*
- work collaboratively together – *when we join forces we are formidable, when we are fragmented, we are controllable!*
- develop and deploy our counting/deep dive approach to provide the evidence for the required changes – the UK public sector financial position continues to deteriorate
- think, act and behave differently





- Alexis Cleveland The Director General from the Cabinet Office is the DG Champion allocated to Kent, she believes the following:-
- each of the three Kent themes represent a unique opportunity to fundamentally change the way local and central government work
- the evidence/business cases we provide, will enable her to ask key questions, in key places on our behalf

***Alexis has already commenced formal engagement with DWP & JobCentre+ on our behalf***



# What is expected of each place?



Leadership Centre for local government

## In general

- **senior leadership support and commitment**
- **open approach to ‘counting’ and input from FD/treasurer**
- **all key partners involved**
- **full engagement in knowledge sharing**

## By October (PBR)

- **indicative findings of approaches, areas and outcomes for service transformation**

## By March (Budget)

- **identification of future models of service delivery; the steps to be taken to achieve them; the benefits for the user; and the efficiencies that they bring**



