

Rafiq Chohan
Assistant Director,
Economic Development & Inclusion

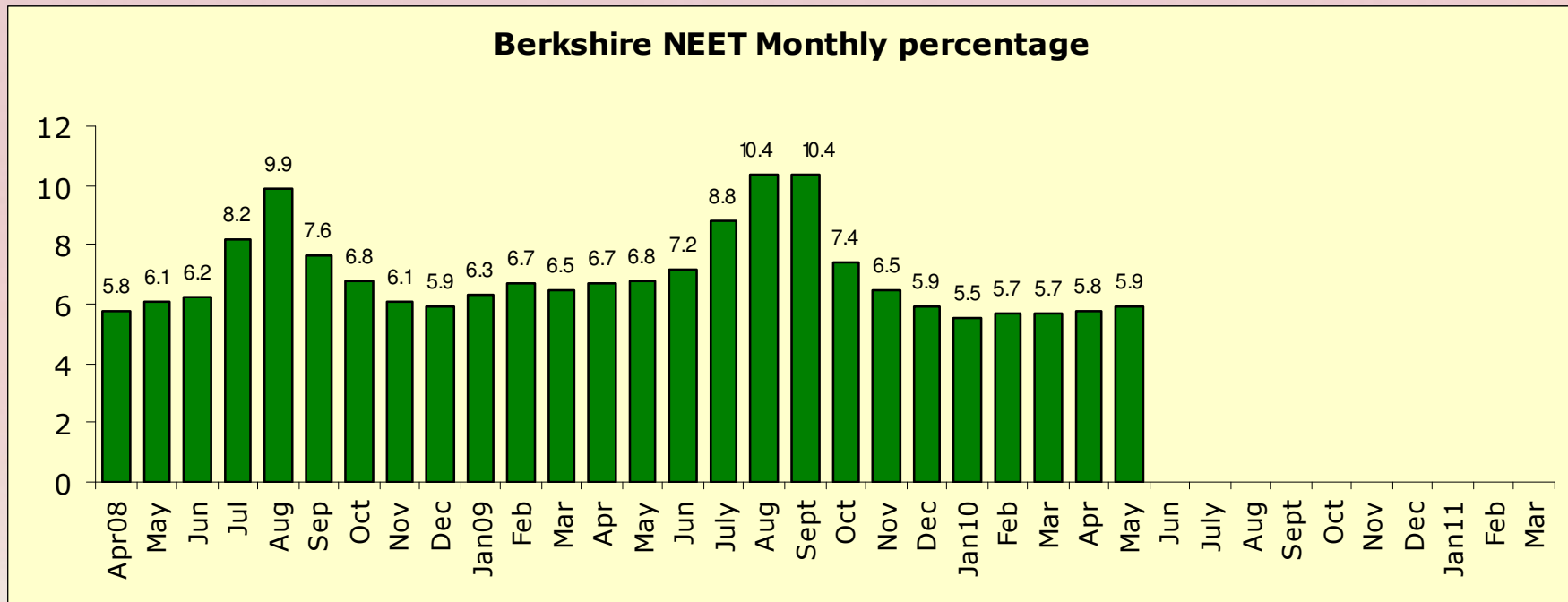
Partnership Working

- Individual
- Local Authority
- Private Sector
- Schools
- College
- Housing
- PCT
- Probation
- YOT
- Voluntary Organisations
- Other Public Sector

Jobs in Slough

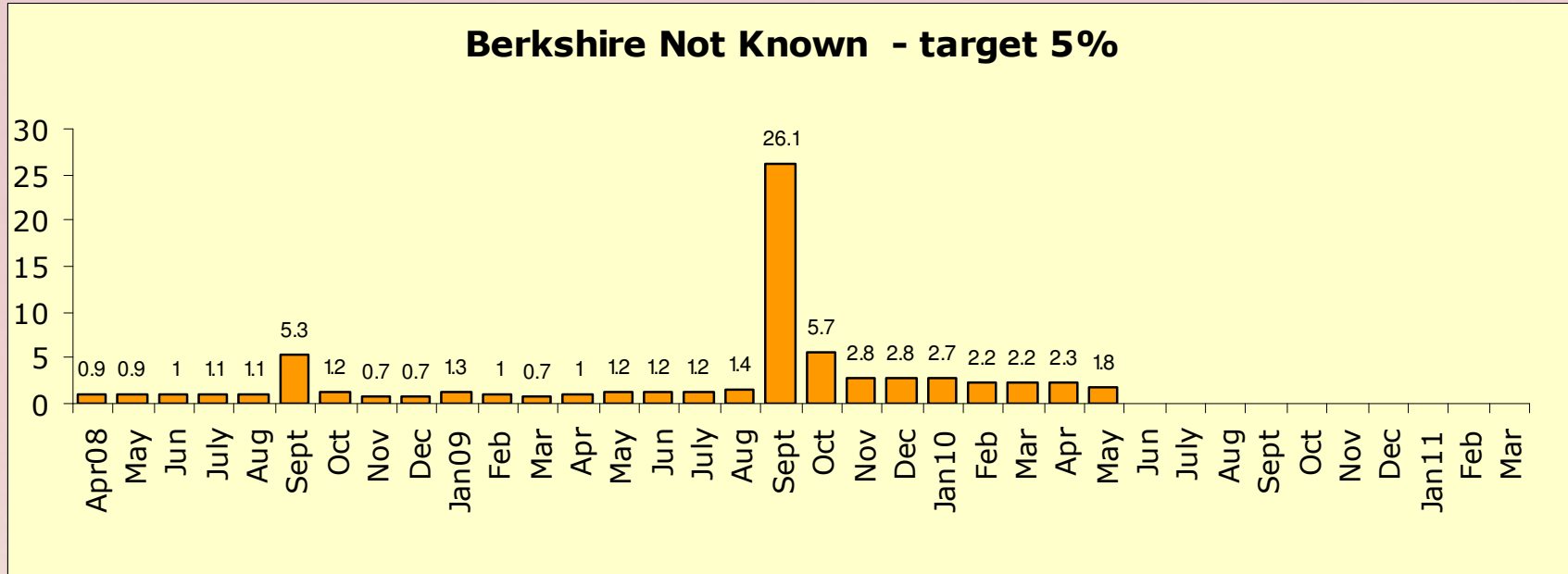
- 86,000
- Includes 7,500 self employed
- 9,100 Manufacturing
- 2,100 Construction
- 62,500 Services
 - 17,400 Distribution, Hotels and restaurants
 - 10,700 Transport and communications
 - 19,800 Finance, IT other business activities
 - 12,400 Public Admin, education and health
 - 2,300 Other
 - 3,000 Tourism

Berkshire NEET Monthly %



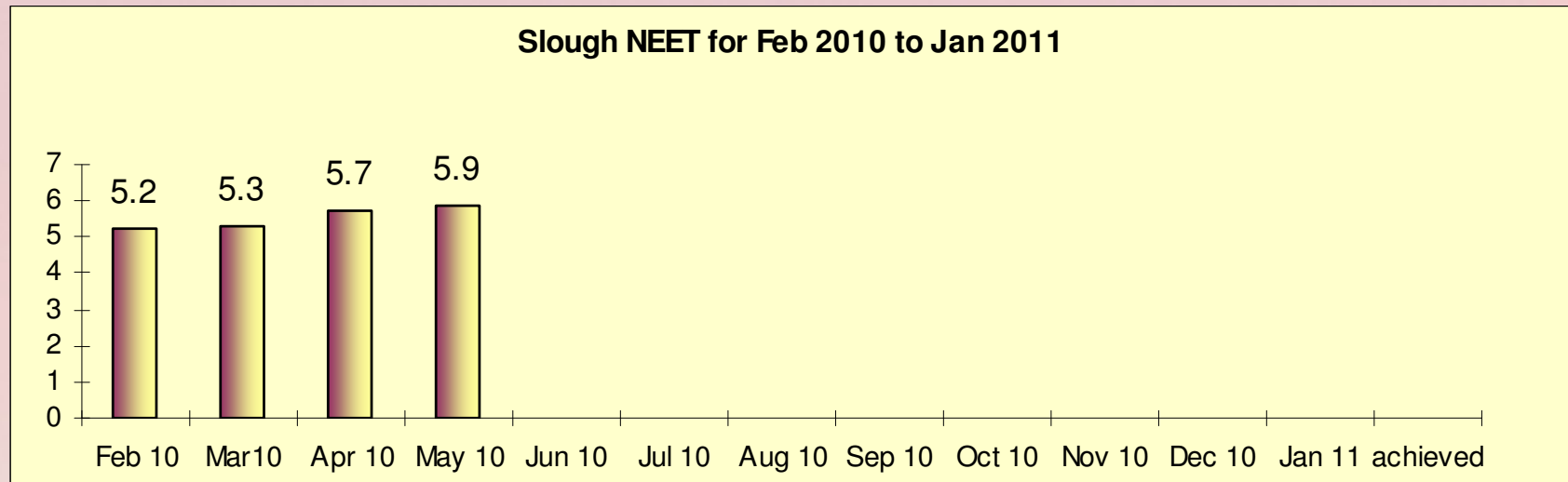
Our current NEET figure is in line with the pan Berkshire figure.

Berkshire Not Known

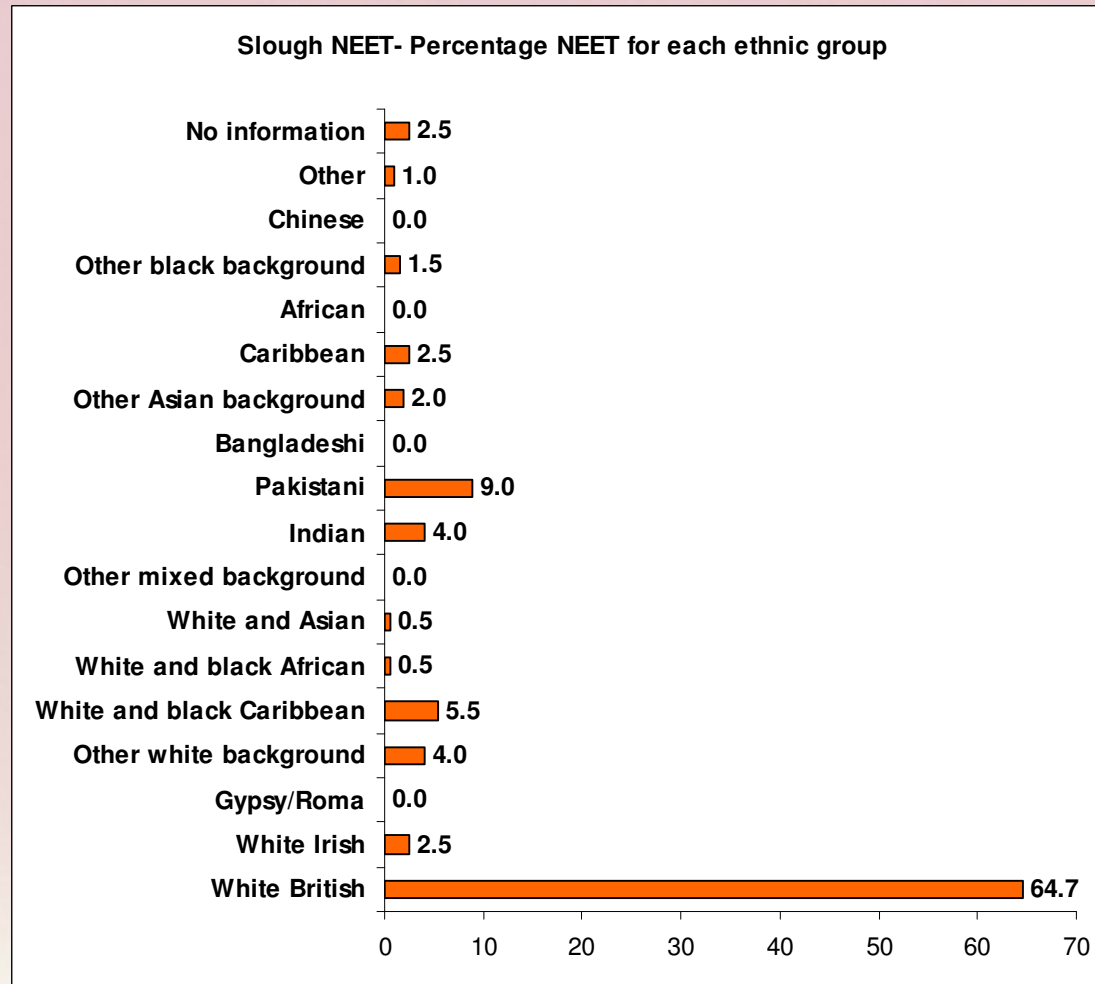


Our not knowns have decreased significantly this month - creating an increase in NEET. We still have the highest in learning figure in Berkshire - 91.7% of 17 year olds are in learning. Our highest NEET group is 18 yr old girls (57) our smallest is 16 yr old boys (just 3!)

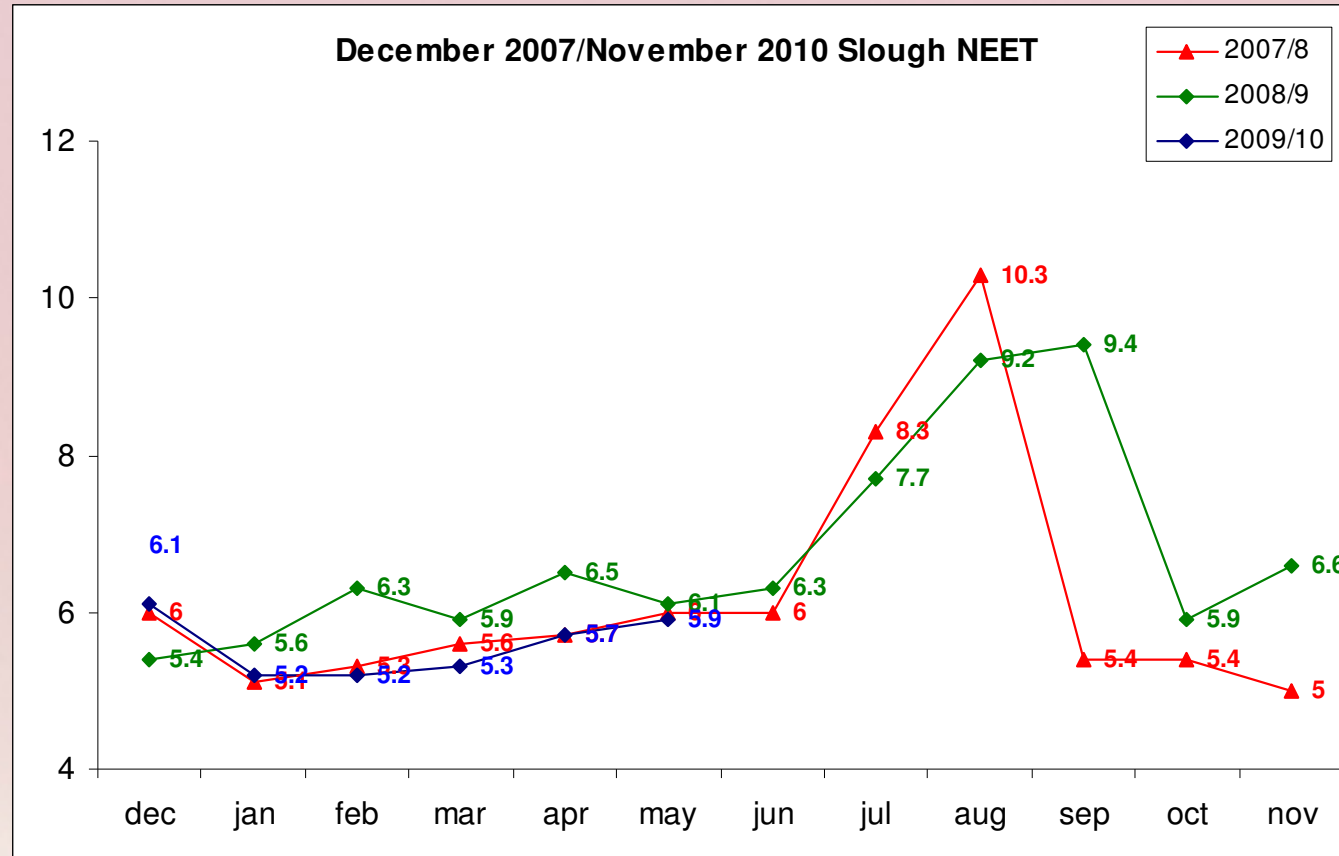
Slough NEET Feb 2010 - Jan 2011



Slough NEET - % for each ethnic group

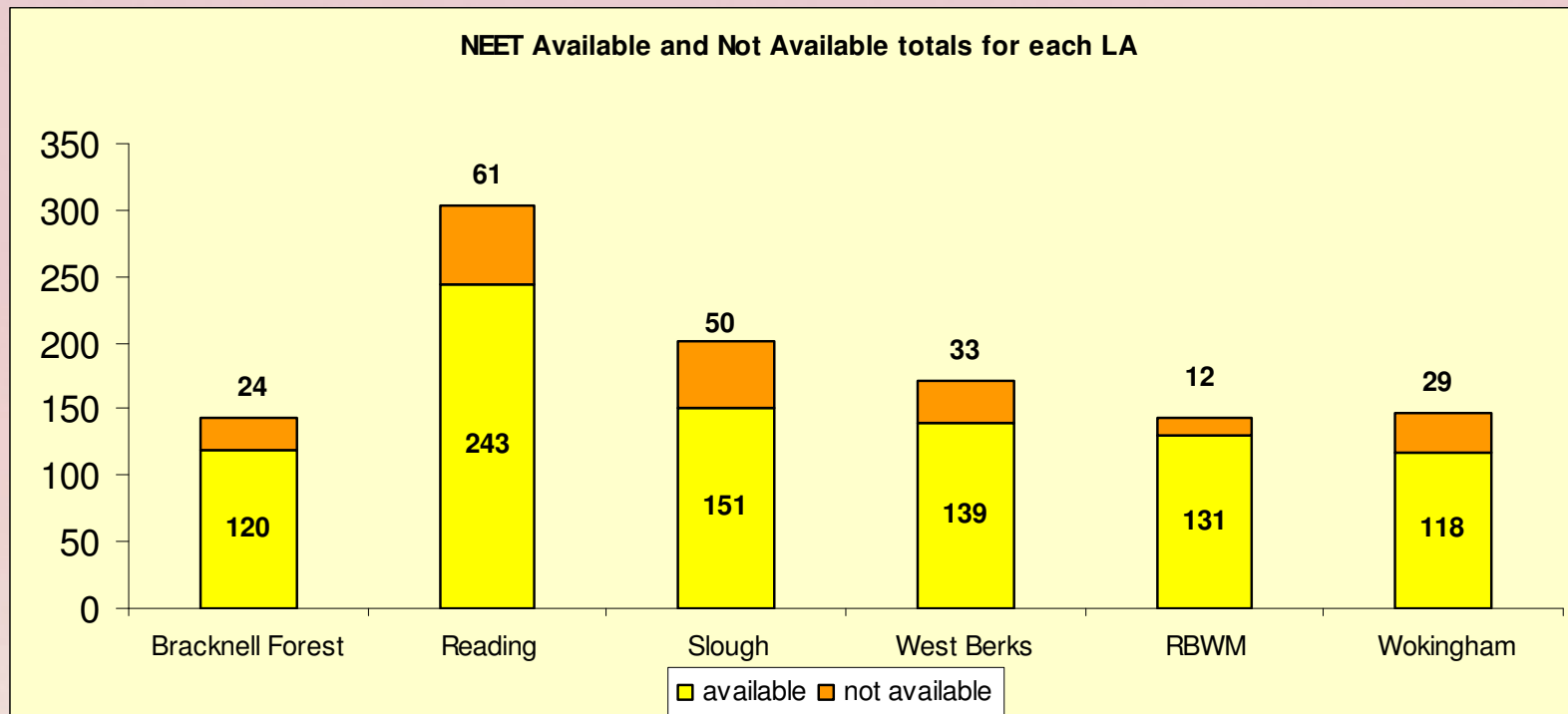


Dec 2007 - Nov 2010 Slough NEET

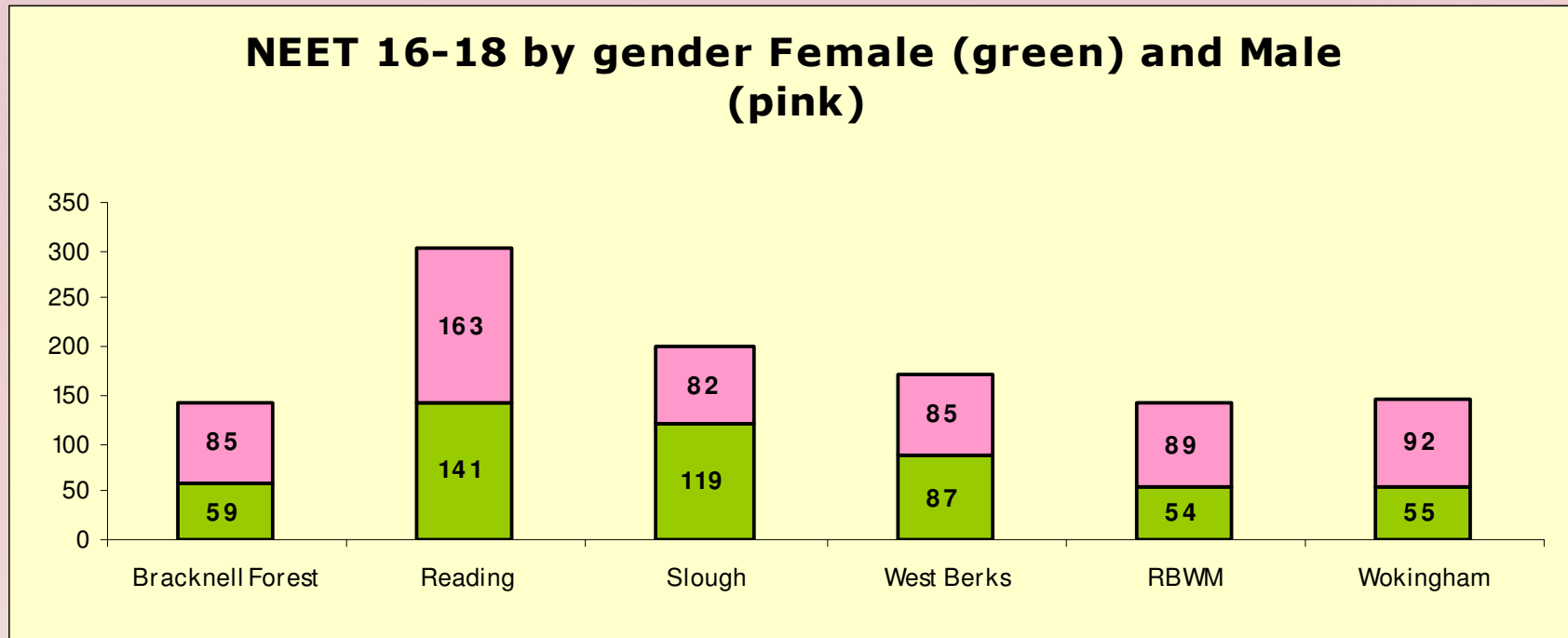


This years NEET pattern is following a similar pattern to 07/08 so far, which is an improvement on 08/09. It will be interesting to see what the typical spike will be in August.

NEET Available and Not Available totals for each LA

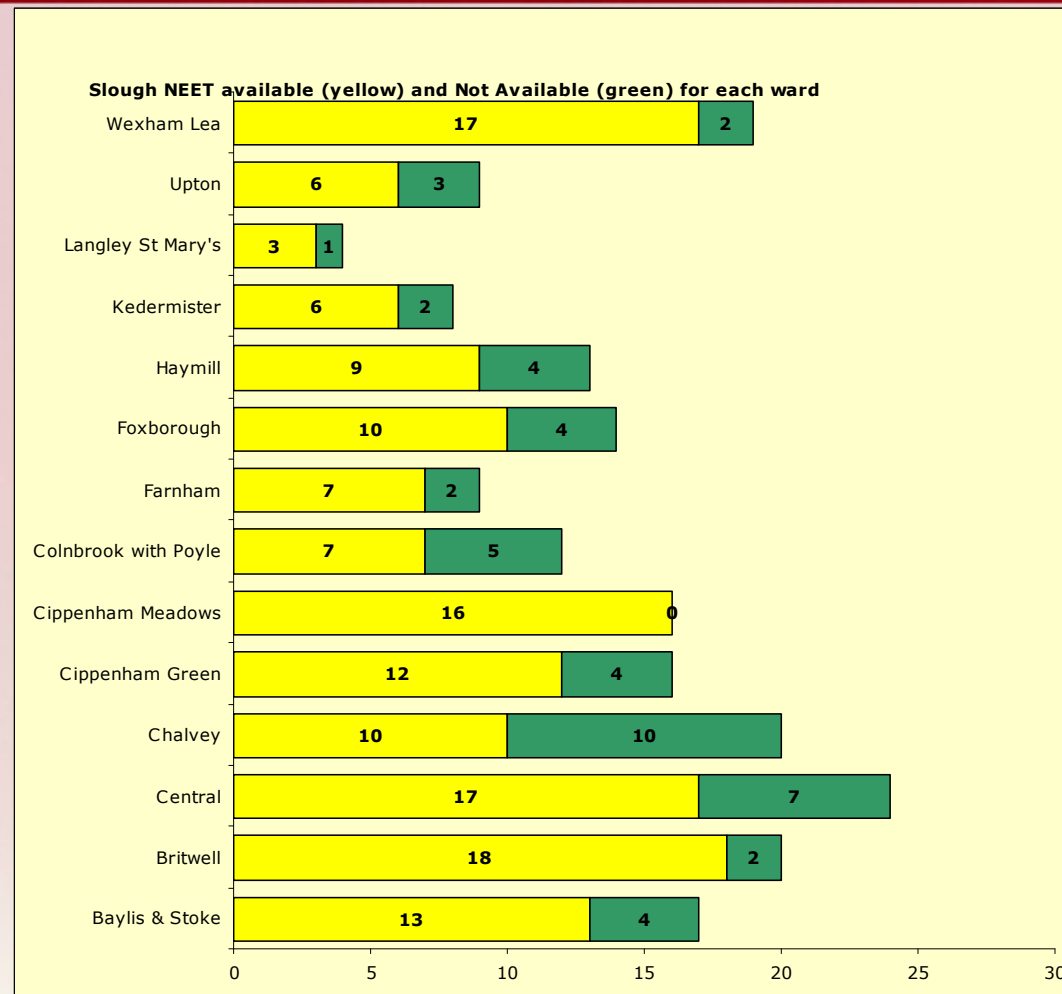


NEET 16 - 18 by Gender



We have more NEET girls than boys. Our IPA's report an increase in the problems girls are experiencing. Boys generally present with low qualifications, substance misuse, anti social behaviour. We have seen an increase of girls with emotional well being issues, e.g. pregnant and break up with partner, housing needs etc. More boys than girls come and ask for condoms. We have focussed a targeted PA on 17 yr old boys and we will re-focus this on girls now.

Slough NEET Available and Not Available for each Ward



Conclusion

- Slough's performance is better than other Berkshire areas despite more challenging socio economic factors.
- Partnership working is a key factor in providing a tailored approach to the needs of individuals.