

South East Regional Integrated Analytical Services briefing note



Young People's
Learning Agency

Young People Not in Education, Employment or Training (NEET), Statistical Neighbour report, March 2010

Date: June 2010

Contact: South East Strategic Analysis Team

Introduction: The National Foundation for Educational Research was commissioned by the Department for Education and Skills (now the Department for Education) to develop a tool that allows local authorities to identify other local authorities (LA) similar to themselves in terms of socio-economic characteristics of their area¹. These comparative authorities are termed statistical neighbours.

The top ten statistical neighbours assigned to each LA are appropriate for comparing performance in terms of the five Every Child Matters outcomes: be healthy, stay safe, enjoy and achieve, make a positive contribution, and achieve economic well-being. A key outcome of this is to reduce the number of young people not in education, employment or training (NEETs).

The data analysed in this report has been extracted from the National Client Caseload Information System (NCCIS). The NCCIS presents monthly statistical neighbour data for young people not in education, employment or training (NEET), young people 'in learning' and those young people recorded with a 'not known' status by Connexions Services. Each local authority, in the South East, was compared for the three measures against the average (mean) for its top ten statistical neighbours.

Key Findings

- The majority of local authorities (LAs) in the region have higher proportions of young people who are NEET (12 LAs) and lower proportions of young people in learning (13 LAs) than the average of their top ten statistical neighbours.
- Portsmouth compares least favourably when compared to its statistical neighbours with a higher NEET figure and a lower 'in learning' figure.

¹ See appendices 1 and 2 for the list of variables used to define statistical neighbours and the list of top ten statistical neighbours for each local authority in the South East

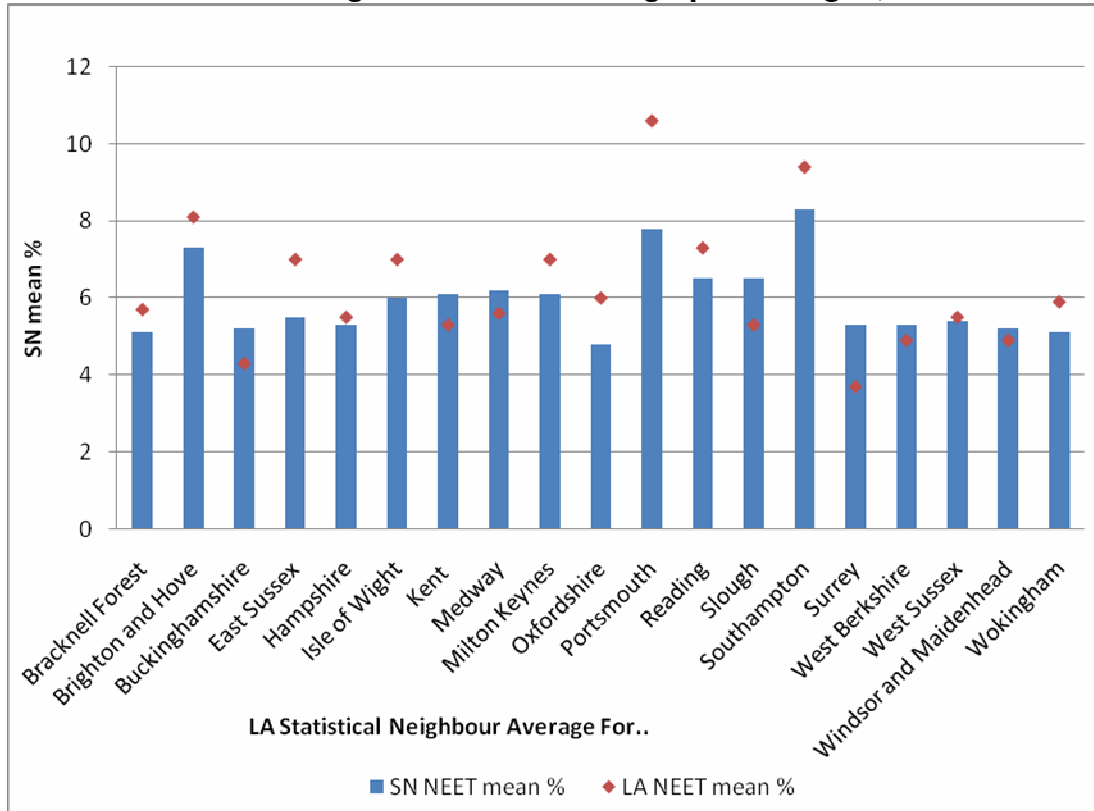
- The Isle of Wight has by far the highest proportion of young people with a ‘not known’ status when compared to its statistical neighbours, with a proportion that is more than four times higher than the average.
- Buckinghamshire and Surrey compare the most favourably when compared to their statistical neighbours.
- Buckinghamshire has a higher ‘in learning’ proportion and lower ‘not known’ figure than the mean for its statistical neighbours whilst Surrey has a lower proportion of NEETs.

Closest Statistical Neighbours

- Three local authorities within the South East, Buckinghamshire, Windsor and Maidenhead and Wokingham, have Surrey as their closest statistical neighbour.
- Six local authorities have another local authority within the South East as their closest statistical neighbour.
- Slough is the only local authority in the South East with all of its top ten closest statistical neighbours outside of the region.

Comparing Statistical Neighbours: Young people not in education, employment or training (NEET)²

Chart 1: Statistical Neighbour NEET average percentages, March 2010



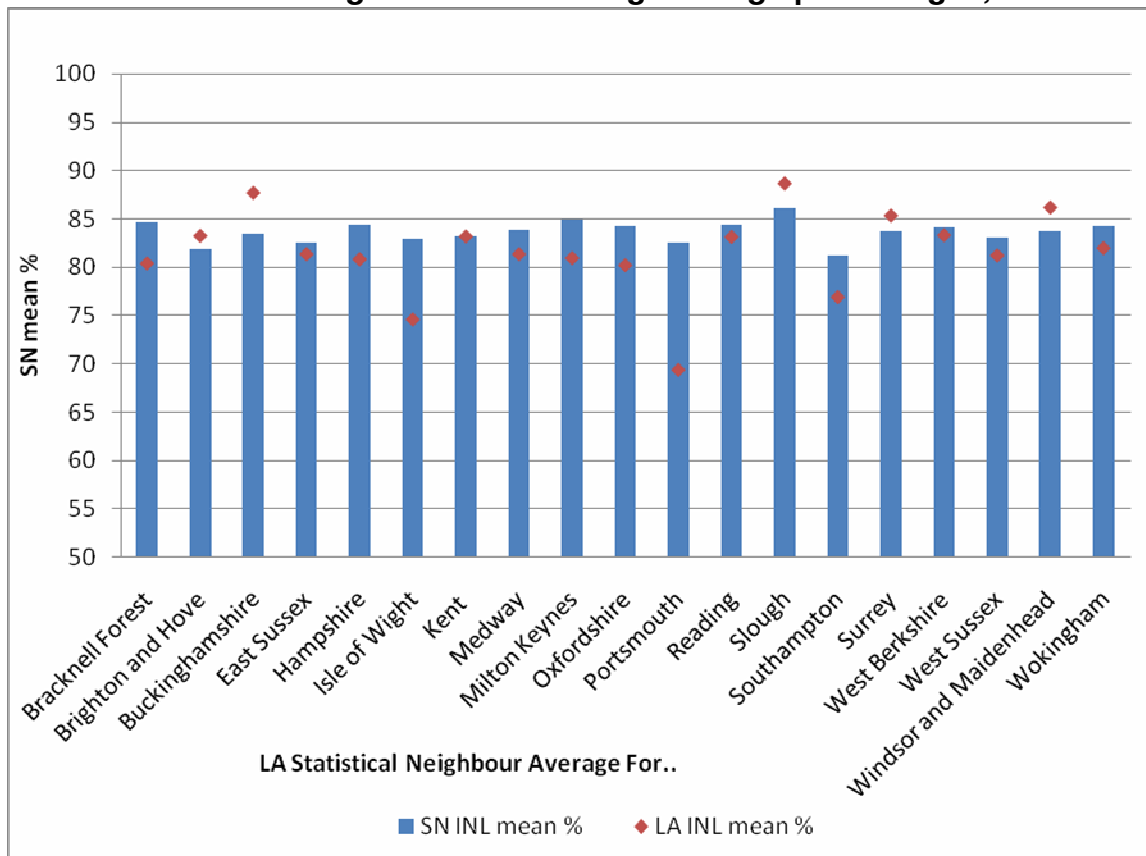
Source: NCCIS, NFER

² Please see appendix 3 for data table

- 12 local authorities (LAs) in the region have NEET proportions above the mean for their top ten statistical neighbours. It should be noted that some of the statistical neighbours are also within the South East so comparisons are within region as well as cross regional.
- Portsmouth compares the least favourably in the region with its proportion of young people not in education, employment or training (NEET). The NEET proportion is 2.8 percentage points (ppts) higher than the average at 10.6 per cent.
- This is followed by East Sussex (1.5 ppts higher) and Oxfordshire (1.2 ppts higher).
- The Surrey NEET figure compares the most favourably to its top ten statistical neighbours. At 3.7 per cent, it is 1.6 ppts lower than the mean. This is followed by Slough (1.2 ppts lower) and Buckinghamshire (0.9 ppts lower).
- Kent, Medway, West Berkshire and Windsor and Maidenhead all have proportions lower than their statistical neighbour averages.

Young people in Learning³

Chart 2: Statistical Neighbour 'In Learning' average percentages, March 2010



Source: NCCIS, NFER

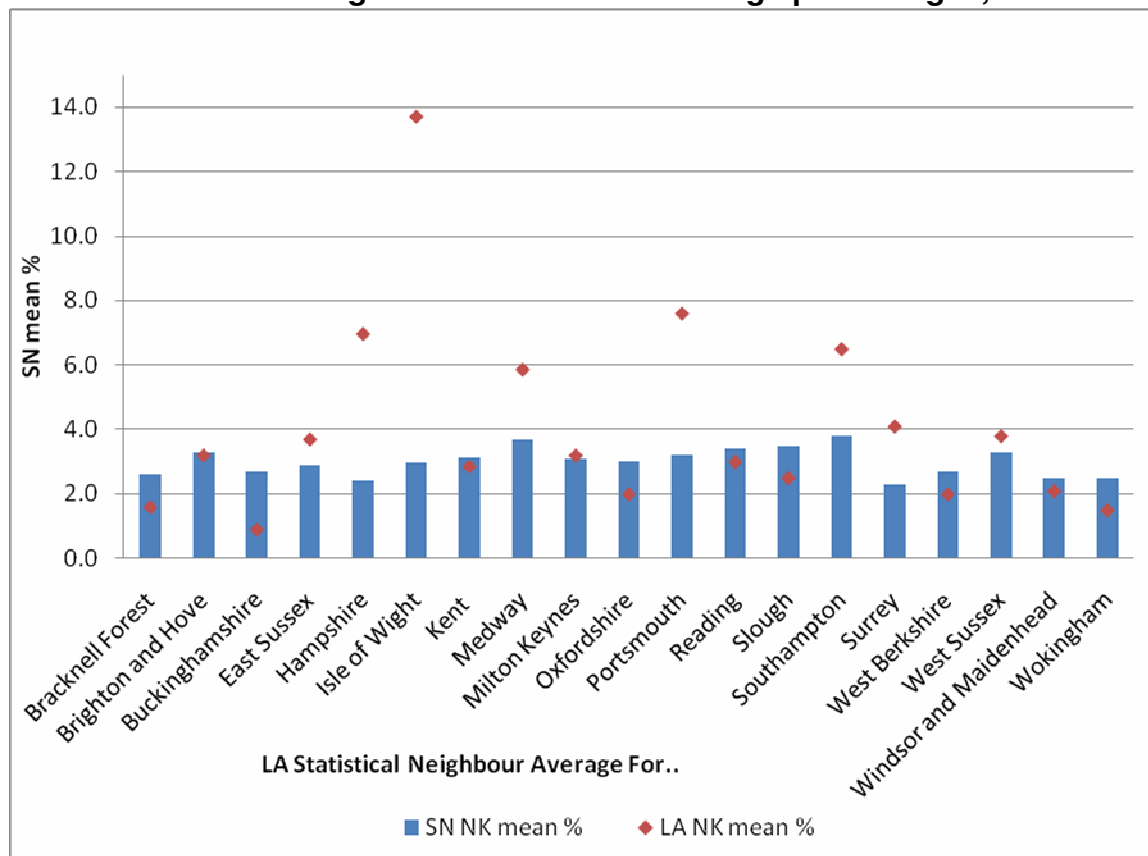
- The majority of local authorities (13) in the South East have lower proportions of young people 'in learning' than the average of their top ten statistical neighbours.

³ Please see appendix 4 for data table

- Portsmouth again compares the least favourably with a percentage 'in learning' figure that is 13 ppts below the average at just 69.5 per cent.
- This is followed by the Isle of Wight (8.3 ppts lower). Their lower 'in learning' proportion is probably due to their high proportion of young people recorded with a 'not known' status (please see section below).
- Buckinghamshire compares the most favourably to its statistical neighbours with a percentage 'in learning' figure of 83.4 per cent, 4.3 ppts higher than the average.
- Brighton and Hove, Kent, Slough, Surrey and Wokingham all have higher 'in learning' proportions than their statistical neighbour averages.

Young people with a 'Not Known' status⁴

Chart 3: Statistical Neighbour 'Not Known' average percentages, March 2010



Source: NCCIS, NFER

- 9 LAs in the South East have higher proportions of young people recorded with a 'not known' status when compared to the mean of their statistical neighbours.
- The Isle of Wight has the largest discrepancy of 'not knowns' when compared to its statistical neighbour average. It is more than 4 times higher than the mean at 13.7 per cent (statistical neighbour average is just 3 per cent).
- Hampshire and Portsmouth also have very high proportions of 'not knowns' when compared to their statistical neighbours.

⁴ Please see appendix 5 for data table

- Buckinghamshire compares the most favourably with a 'not known' proportion 1.8 pts below the statistical neighbour average at just 0.9 per cent.

Appendix

1. List of variables used to define statistical neighbours

Mean Weekly pay – gross

% pupils known to be eligible for FSM (2005)

% vehicles that are 3 years old or less

% dependent Children – Occupancy Rating – +2 or more

% dependent children living in overcrowded households

% dependent Children – Two or more cars or vans in households

% dependent children in one adult households

% dependent children in households where HRP is in any managerial & professional occupations

% dependent children in households where HRP is in routine occupations

% people with mixed ethnicity

% people with Indian ethnicity

% people with Pakistani ethnicity

% people with Bangladeshi ethnicity

% people with other Asian ethnicity

% people with Black Caribbean ethnicity

% people with Black African ethnicity

% people with other Black ethnicity

% of working age people with higher qualifications

% people in good health

% households owned outright or with mortgage

% households with 3 or more dependent children

% of the population living in villages, hamlets or isolated settlements

2. List of South East local authorities' statistical neighbours

BRACKNELL FOREST – Hertfordshire, West Berkshire, Buckinghamshire, Hampshire, Surrey, Bedfordshire, Windsor & Maidenhead, Oxfordshire, Cambridgeshire, Cheshire.

BRIGHTON & HOVE – Bristol, Bournemouth, Portsmouth, Reading, Sheffield, Southampton, Bath & North East Somerset, Southend, City of York, Plymouth.

BUCKINGHAMSHIRE – Surrey, West Berkshire, Bracknell Forest, Windsor & Maidenhead, Hertfordshire, Oxfordshire, Bedfordshire, Hampshire, Cambridgeshire, Wokingham.

EAST SUSSEX – Kent, Dorset, West Sussex, Gloucestershire, Devon, Essex, North Somerset, Worcestershire, Shropshire, Suffolk.

HAMPSHIRE – West Sussex, South Gloucestershire, Bedfordshire, North Somerset, Essex, Worcestershire, West Berkshire, Hertfordshire, Cambridgeshire, Leicestershire.

ISLE OF WIGHT – Torbay, Southend, Bournemouth, East Sussex, Cornwall, Devon, Norfolk, Cumbria, Nottinghamshire, Poole.

KENT – Essex, Swindon, East Sussex, Northamptonshire, Worcestershire, Warwickshire, West Sussex, Staffordshire, Lancashire, Bedfordshire.

MEDWAY – Thurrock, Swindon, Kent, Bexley, Northamptonshire, Havering, Telford & Wrekin, Lancashire, Dudley, Southend.

MILTON KEYNES – Northamptonshire, Trafford, Swindon, Kent, Bedfordshire, Leeds, Bury, Hertfordshire, Stockport, Essex.

OXFORDSHIRE – Cambridgeshire, Bath & North East Somerset, West Berkshire, Hertfordshire, Wiltshire, Hampshire, Gloucestershire, Bracknell Forest, Bedfordshire, Buckinghamshire.

PORTSMOUTH – Plymouth, Southampton, Peterborough City, Southend, Bournemouth, Torbay, Bristol, Telford & Wrekin, Sheffield, City of Derby.

READING – Bristol, Sutton, Brighton & Hove, Milton Keynes, Bromley, City of Derby, Bath & North East Somerset, Sheffield, Trafford, Hillingdon.

SLOUGH – Hillingdon, Luton, Hounslow, Redbridge, Enfield, Coventry, Birmingham, Blackburn, Bradford, Wolverhampton.

3. NEET Statistical Neighbour table

Local authority	LA NEET mean %	SN NEET mean %	ppt diff
Bracknell Forest	5.7	5.1	0.6
Brighton and Hove	8.1	7.3	0.8
Buckinghamshire	4.3	5.2	-0.9
East Sussex	7	5.5	1.5
Hampshire	5.5	5.3	0.2
Isle of Wight	7	6	1
Kent	5.3	6.1	-0.8
Medway	5.6	6.2	-0.6
Milton Keynes	7	6.1	0.9
Oxfordshire	6	4.8	1.2
Portsmouth	10.6	7.8	2.8
Reading	7.3	6.5	0.8
Slough	5.3	6.5	-1.2
Southampton	9.4	8.3	1.1
Surrey	3.7	5.3	-1.6
West Berkshire	4.9	5.3	-0.4
West Sussex	5.5	5.4	0.1
Windsor and Maidenhead	4.9	5.2	-0.3
Wokingham	5.9	5.1	0.8

Source: NCCIS, NFER

4. 'In Learning' Statistical Neighbour table

Local authority	LA INL mean %	SN INL mean %	ppt diff
Bracknell Forest	80.5	84.6	-4.1
Brighton and Hove	83.3	81.9	1.4
Buckinghamshire	87.8	83.4	4.3
East Sussex	81.4	82.6	-1.1
Hampshire	80.9	84.5	-3.6
Isle of Wight	74.7	83.0	-8.3
Kent	83.3	83.2	0.1
Medway	81.4	83.9	-2.4
Milton Keynes	81.0	84.9	-3.9
Oxfordshire	80.3	84.2	-3.9
Portsmouth	69.5	82.5	-13.0
Reading	83.2	84.4	-1.2
Slough	88.7	86.1	2.6
Southampton	77.0	81.2	-4.2
Surrey	85.4	83.8	1.6
West Berkshire	83.4	84.1	-0.7
West Sussex	81.3	83.0	-1.7
Windsor and Maidenhead	86.2	83.7	2.6
Wokingham	82.1	84.3	-2.2

Source: NCCIS, NFER

5. 'Not Known' Statistical Neighbour table

Local authority	LA NK mean %	SN NK mean %	ppt diff
Bracknell Forest	1.6	2.6	-1.0
Brighton and Hove	3.2	3.3	-0.1
Buckinghamshire	0.9	2.7	-1.8
East Sussex	3.7	2.9	0.8
Hampshire	7.0	2.4	4.6
Isle of Wight	13.7	3.0	10.7
Kent	2.9	3.1	-0.3
Medway	5.9	3.7	2.2
Milton Keynes	3.2	3.1	0.1
Oxfordshire	2.0	3.0	-1.0
Portsmouth	7.6	3.2	4.4
Reading	3.0	3.4	-0.4
Slough	2.5	3.5	-1.0
Southampton	6.5	3.8	2.7
Surrey	4.1	2.3	1.8
West Berkshire	2.0	2.7	-0.7
West Sussex	3.8	3.3	0.5
Windsor and Maidenhead	2.1	2.5	-0.4
Wokingham	1.5	2.5	-1.0

Source: NCCIS, NFER